

# commeo Light Send

**selve**



**DE**

## **Betriebsanleitung**

Bitte sorgfältig aufbewahren!

**EN**

## **Operating instruction**

Please keep in a safe place!

**commeo**







EN Operating instruction

Please keep in a safe place!

The commeo Light Send permits the automatic shading by driving the shutters in dependence on the sun radiation. This function does not only protect the plants, the parquet etc., but keeps the room cool even during absence.

The optionally selectable temperature-dependent shading permits a longer stay of the sun shading, in order to be able to initially use the sun energy for warming up rooms (e.g. conservatories).

The activatable twilight function provides the closure of the shutter at the evening dusk.

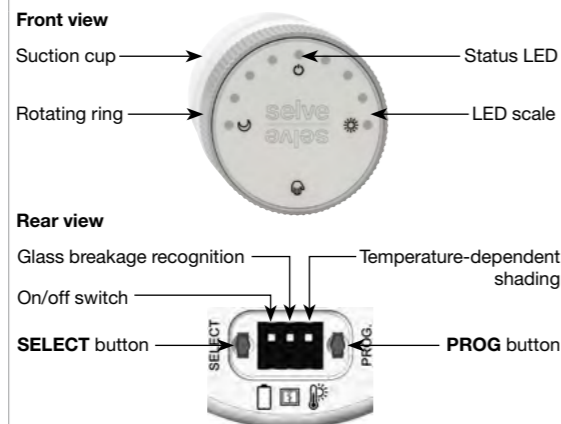
The glass breakage function permits the recognition of vibrations and provides additional protection with the automatic closure of the shutter.

Designated use

The commeo Light Send may be used to control roller shutter systems only. Please note that radio sets cannot be operated in areas with increased risk of interference (e.g. hospitals, airports).

- The operator does not enjoy any protection from disturbances by other remote signalling equipment and terminal equipment.

Explanation of displays and buttons



Device position for the selection of the mode: Depending on the device position, different modes can be called up by rotating the entire device (the symbol in the top position is valid).

Rotating ring: The outer rotating ring serves for the manual operation or the setting of the light values.

LED scale/status LED: The LED scale/status LED signals the status of the manual commands or serves for the display of parameter settings.

Suction cup: The suction cup serves for the assembly to the corresponding window pane.

Glass breakage recognition: Optional activation of the glass breakage function.

On/off switch: Complete switch-off of the commeo Light Send.

Temperature-dependent shading: Activation of the temperature-dependent shading for the sun protection function.

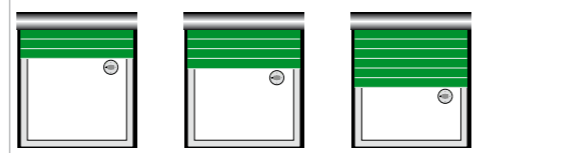
SELECT button: Button for the start of the receiver search or the selection of the receivers during the installation phase.

PROG button: Teaching or unlearning the commeo Light Send after previous selection of the receiver.

Installation/shading position

The commeo Light Send accesses the set intermediate position of the receivers when exceeding the sun threshold (this is usually the lower end position set in the factory settings).

If the sensor is passed over during the shading drive, the motor stops and runs up again for some seconds. This function permits to determine the shading position individually by setting the light sensor:



The position of the shutter is regularly adapted to the sun position by correction drives.

Switch on the commeo Light Send

In the delivery state, the battery of the commeo Light Send is inserted and the device is switched off.

- Switch up = on; Switch down = off

Manual operation

For a manual operation of the taught in receivers, the commeo Light Send must be in the automatic or manual mode.

A manual ascent, descent or the stopping of a drive takes place by rotating the rotating ring:

Direction of rotation: Action. Direction of rotation: Left. If the rotating ring is rotated toward the left, a descent or stop command is sent alternately: DOWN - STOP - DOWN - STOP

Direction of rotation: Right. If the rotating ring is rotated toward the right, an ascent or stop command is sent alternately: UP - STOP - UP - STOP

A manual command is shown by sequential LEDs.



The status LED thereby supplies the transmission status of the drive command.

Green: The radio command has been sent and all taught in receivers execute the command.

Red: In case of a malfunction, the status LED switches from green to red.

Orange: The status LED glows orange if no receiver is learnt in. No sequential light is displayed.

Functions, parameter setting

The individual operations with the parameter settings corresponding to this are explained in the following. The corresponding mode is thereby reached by rotating the entire commeo Light Send.

The mode is active whose symbol is at the top.

Position: Short description. Mode: Automatic mode. The automatic symbol is in the top position. The set automatic functions are active and are executed according to the set parameters.

Mode: Manual mode. The hand symbol is in the top position. All automatic functions are deactivated, only manual commands are possible.

Note: The glass breakage function is also deactivated.

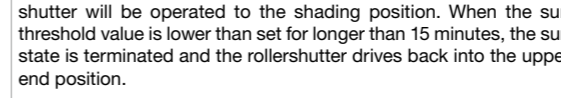
Mode: Setting of the sun protection function. In this position, the commeo Light Send switches to the threshold value setting of the sun protection function, or the temperature-dependent shading.

Mode: Parameter setting of the twilight function. In this position, the commeo Light Send switches to the threshold value setting of the twilight function.

Sun protection function

When the sun protection function is activated, the currently measured light value is compared to the set sun threshold value.

Functioning: If the set sun threshold value is exceeded for 3 minutes, the roller-shutter will be operated to the shading position.



Setting of the sun threshold value: The sensitivity of the sun protection function can be set by the sun threshold value.

Rotate the entire device. The sun symbol needs to be at the top. The LEDs now display the state of the sun protection function.

If the sun protection function is activated, the currently measured brightness is displayed by a green scale via the LEDs.

Temperature-dependent shading

The threshold value can now be increased or reduced with the help of the outer rotating ring.

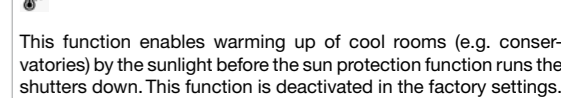
Functioning: If the set sun threshold value is exceeded for 3 minutes, the roller-shutter will be operated to the shading position.

Test of the function: In case that threshold values were changed and the sensor is turned back to automatic mode, the system simulates a sun level measurement within the first minute.

Temperature-dependent shading

The temperature-dependent shading is activated by the slide switch on the rear.

Functioning: Depending on the measured room temperature a delay in execution of the sun protection command is calculated.



Safety instructions

- Use in dry rooms only. For use with unmodified original SELVE parts only. Keep persons away from the systems operating range. Never place objects in the travel range.

Twilight function

With an activated twilight function, the currently measured light value is compared with the set threshold value for the twilight command.

Functioning: If the set twilight threshold value is lower than set for 3 minutes, the rollershutter runs down to the lower end position.



Note: The next twilight command is only executed after sufficient brightness (>1000 Lux).

Setting the twilight threshold value: The sensitivity of the twilight function can be set individually by the twilight threshold value.

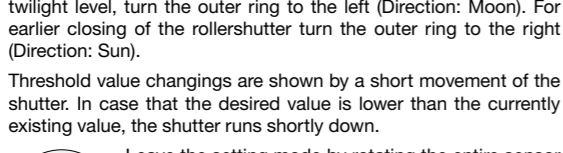
Rotate the entire device. Moon symbol needs to be at the top. The LEDs now display the state of the twilight function.

If the twilight function is activated, the currently measured brightness is displayed via the LED scale.

Glass breakage function

The glass breakage function is switched on by the slide switch on the rear side.

Functioning: If a vibration is recognised by the sensor, the rollershutter is operated to the lower end position.

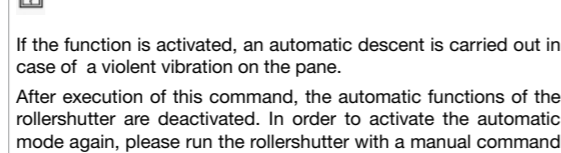


Test of the function: The activated glass breakage function can be tested by shaking the commeo Light Send.

Glass breakage function

The glass breakage function is switched on by the slide switch on the rear side.

Functioning: If a vibration is recognised by the sensor, the rollershutter is operated to the lower end position.



Test of the function: The activated glass breakage function can be tested by shaking the commeo Light Send.

SELVE commeo radio/programme transmitter

The commeo Light Send sends radio signals of the SELVE radio technology commeo and permits wireless operation of SELVE commeo radio receivers.

Up to maximally 32 receivers can be operated in parallel. The operating manual of the receiver must thereby be observed.

Activate the readiness to learn in the receiver: In order to learn the commeo Light Send in or out the receivers need to be activated.

First setup/transmitter not yet taught in: Interrupt the power of the receiver for >1 second.

Readiness to activation by an already learnt in transmitter: Alternatively an already taught in transmitter can also be used to activate learning readiness of the receiver.

The readiness of the receiver to learn in new transmitters is now also activated for 4 minutes.

Search/select the receiver (SELECT mode)

Press the SELECT button of the commeo Light Send for 3 seconds. The SELECT mode is started and the commeo Light Send searches for all receivers which were activated before.

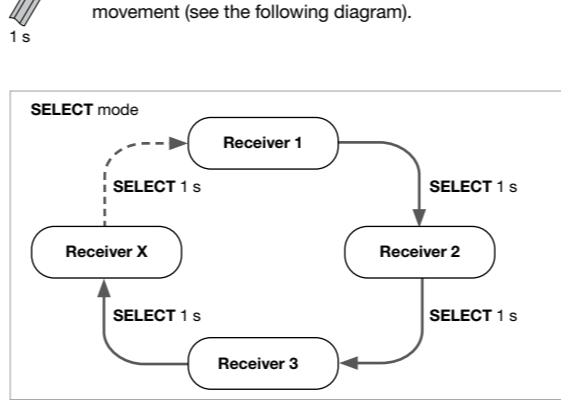
In case that no receiver could be found during the search, this will be signalled with a red status LED at the commeo Light Send and the SELECT mode is quit.

If one or more receivers are found, this is signalled briefly with a green status LED at the transmitter.

By pressing the SELECT button several times for 1 second, the requested receiver can be chosen.

Quit the SELECT mode: By pressing of the SELECT button for 3 seconds, you quit the SELECT mode.

Delete all receivers in the commeo Light Send: In order to delete all receivers in the commeo Light Send, the SELECT and PROG button at the rear are pushed simultaneously for 9 seconds.



In order to teach a transmitter in or out, select the receiver with the SELECT button. The selected receiver confirms the selection by a short movement and it can be operated now with the remote.

Teaching the transmitter in or out

If a receiver is selected as in the section Search/select receiver, it can be taught in and out.

Press the PROG button for 1 second, in order to teach the commeo Light Send in or out.

A green status LED means that the commeo Light Send was taught in in the receiver.

A red status LED means that the commeo Light Send was learned out of the receiver.

Quit the SELECT mode: By pressing of the SELECT button for 3 seconds, you quit the SELECT mode.

Delete all receivers in the commeo Light Send: In order to delete all receivers in the commeo Light Send, the SELECT and PROG button at the rear are pushed simultaneously for 9 seconds.

Changing the battery

The commeo Light Send must be opened for a battery exchange!

1. Remove the fastening screws: Remove the two screws on the rear side of the commeo Light Send in order to loosen the lid.

2. Remove the lid: The front cover is now loosened and can be removed from the rotating ring.

3. Exchange of the battery: Remove the empty battery from the battery holder and replace it with a new battery type CR2450.

4. Insert the lid back: Place the lid back on the housing in the correct position.

5. Screw the lid on: The lid is fixed again on the rear side with the screws and the commeo Light Send is operational again.

Technical data

Battery: (3V DC) CR2450. Free field range: up to 150 m. Range in buildings: up to 15 m. Radio frequency: 868.1 MHz. Max. transmission output: 10 mW. Ambient temperature: 0 °C to +55 °C. Safety class: IP 20. Dimensions (without antenna): Ø 57 mm. height installed approx. 24 mm.

Subject to change without prior notice.

Troubleshooting

The shutter does not drive, the LEDs stay off: The commeo Light Send is not switched on.

The battery in the transmitter is empty: Insert a new battery.

The battery is inserted incorrectly: Insert the battery correctly.

The commeo Light Send is outside of the radio range: Reduce the distance to the receiver.

The commeo Light Send is not taught in in the receiver: Teach in the commeo Light Send.

The shutter does not drive down when there is sunshine: Rotate the commeo Light Send into the correct position (automatic mode).

The sun threshold value is not exceeded: Adapt the sun threshold value.

Temperature-dependent shading provides a corresponding delay: Adapt the sun threshold value.

The commeo Light Send does not carry out any automatic drive commands: Rotate the commeo Light Send into the correct position (automatic mode).

The shutter is at the lower end limit and does not carry out any automatic drive commands: Open the shutter by a manual command; after the manual command automatic mode is activated again.

Disposal of the device

Do not dispose of the device in domestic waste! The laws and standards of the country must be adhered to for the disposal of the device and it must be disposed of through the local collection points for old electronics devices!

The device contains electrical components which must be disposed of as electronics scrap. The housing consists of recyclable plastic.

General declaration of conformity

General declaration of conformity: SELVE GmbH & Co. KG company, hereby declares that the commeo Light Send is in conformity with the basic requirements and other relevant provisions of the Directive 2014/53/EU.

The declaration of conformity can be looked up at www.selve.de.

SELVE Service Hotline

SELVE Service Hotline: Hotline: Phone +49 2351 925-299. Download the operating manuals at www.selve.de or QR scan.

